

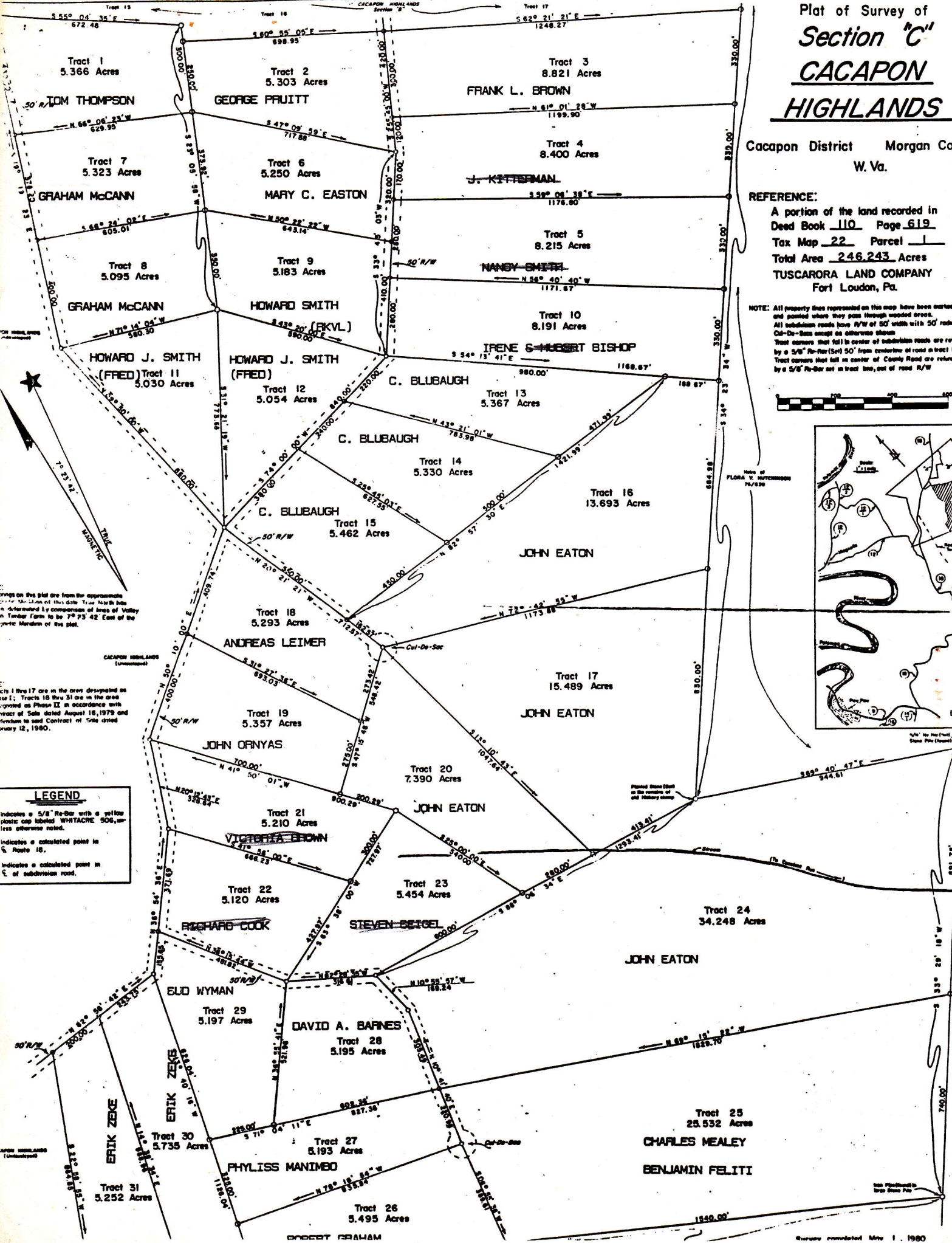
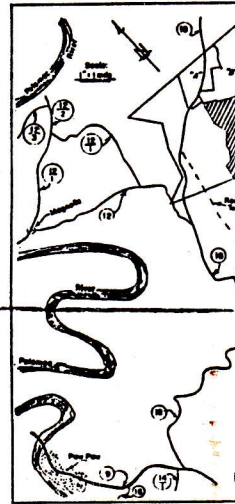
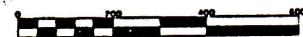
# Plat of Survey of Section "C" CACAPON HIGHLANDS

Cacapon District Morgan Co.  
W. Va.

### REFERENCE:

A portion of the land recorded in  
Deed Book 110 Page 619  
Tax Map 22 Parcel 1  
Total Area 246.243 Acres  
TUSCARORA LAND COMPANY  
Fort Loudon, Pa.

NOTE: All property lines represented on this map have been marked and painted where they pass through wooded areas. All subdivision roads have R/W of 50' width with 50' center. C/D-D/S except as otherwise shown. Tract corners that fall in center of subdivision roads are reb by a 5/8" R/R (S+I) 50' from centerline of road in tract. Tract corners that fall in center of County Road are reb by a 5/8" R/R set in tract line, out of road R/W.



Traps on this plot are from the approximate location of this date. Trap No. 10 is a reference by comparison of lines of Valley N. Timber Farm to be 79° 23' 42" East of the true Meridian of this plot.

Tracts 1 thru 17 are in the area designated as Phase I; Tracts 18 thru 31 are in the area covered as Phase II in accordance with tract of Sale dated August 16, 1979 and Vietnam to said Contract of Sale dated January 12, 1980.

**LEGEND**  
Indicates a 5/8" R/R-Bar with a yellow plastic cap labeled WHITACRE 506, unless otherwise noted.  
Indicates a calculated point in S. Route 10.  
Indicates a calculated point in S. of subdivision road.